

# OVEN & GAS STOVE INDUCTION COOKER COMPONENTS



SEMTECH

# OVEN COMPONENTS

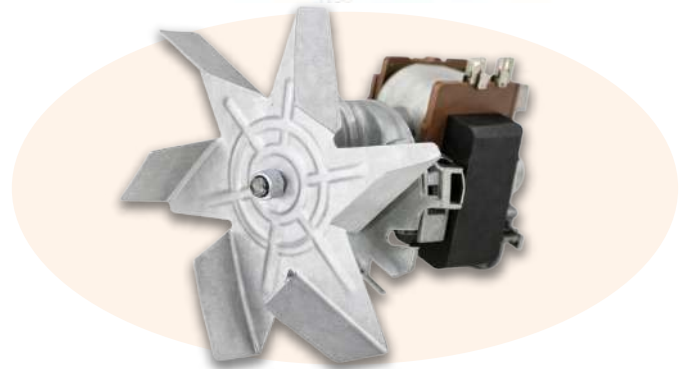
## GRILL MOTOR

- Synchronous Motor
- 220V - 240VAC
- Rated Voltage: 220 - 240VAC
- Rated Frequency: 50-60Hz
- 50-60Hz
- Various ratios available
- 4-6W
- TUV, CE certified
- Special for chicken turning and grill
- Customizable torque valve
- Plastic or metal gear set



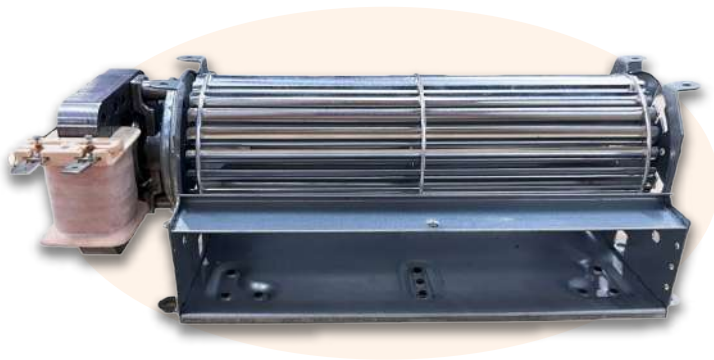
## OVEN FAN MOTOR

- Fan Bladed Shaded Pole Motor
- Application: Oven, Grill
- Rated Voltage: 120V-230VAC
- Rated Frequency: 50-60Hz
- Input Power: 15W-40W
- Rotation: CW, CCW



## OVEN DRAIN PUMP MOTOR

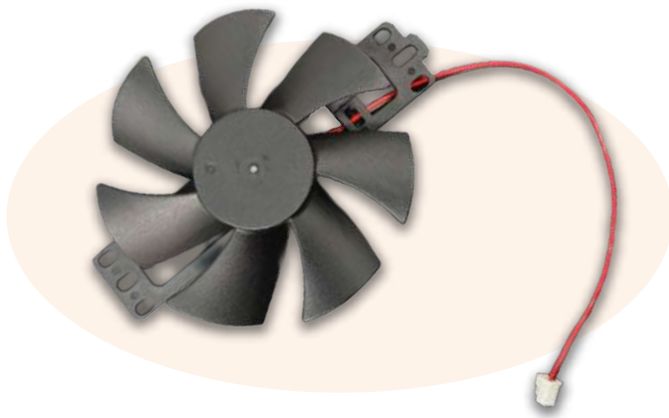
- Radial Fan
- Used for ovens, cooling equipment, ventilation, and cooling systems
- Rated Voltage: 220V-240VAC
- Rated Frequency: 50-60Hz
- Input Power: 15W-40W
- Rotation: CW, CCW



# COOKER COMPONENTS

## INDUCTION COOKER COIL

- Pure Copper or CCA Wire
- Power: 1400–1800W
- Rated Voltage: 3.5kV–25 kV
- Thermal and RCD Protection

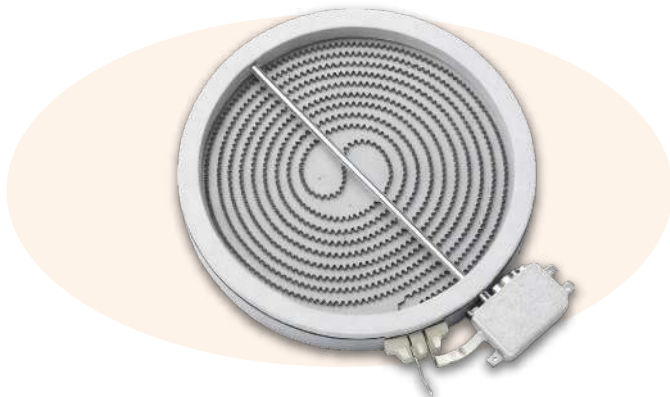
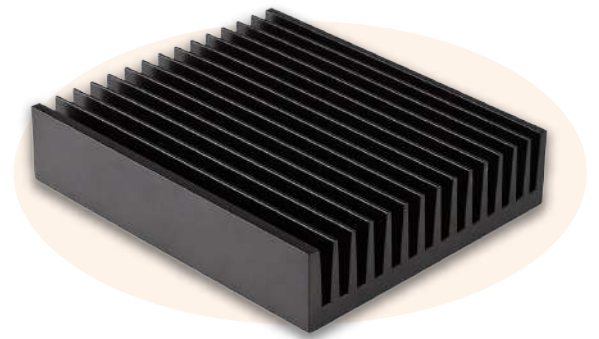


## INDUCTION COOKER DC FAN

- Pure Copper or CCA Wire
- 12-24 V
- 1500-2300 RPM
- 48 dB

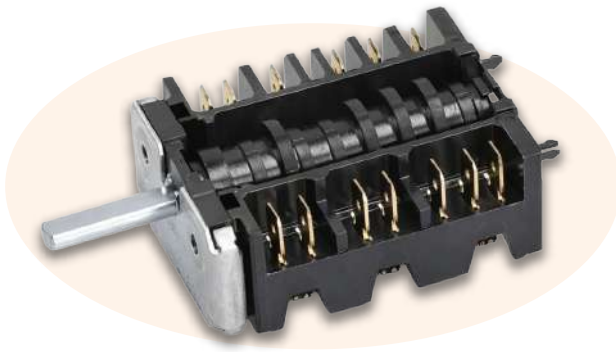
## INDUCTION COOKER COOLER

- 220-240V
- 1000-2000W
- Extruded aluminum with high thermal conductivity
- Natural aluminum or coating



## VITROSERAMIC HOT PLATE

- Power Range: 800–2800 W, customizable
- Voltage Range: 220–380VAC, customizable
- Material: Aluminum or Copper
- Extension Lead Length: Customizable
- Wire Gauge-Thickness: Customizable

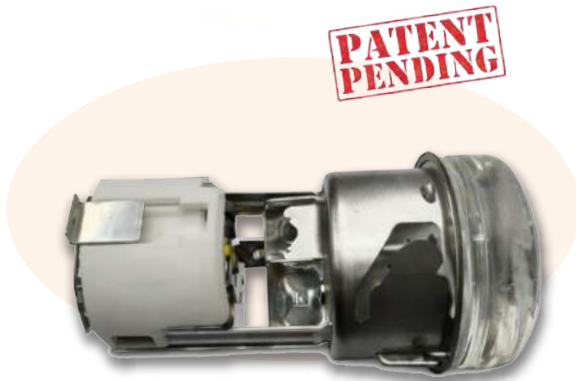
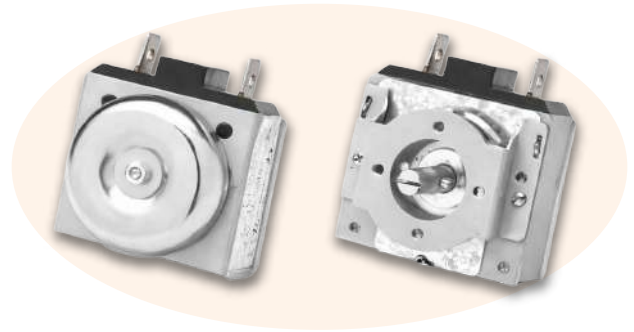


## ROTARY SWITCHES

- Rotary Switches
- Rating 10A 250VAC / 16A 125VAC
- Mechanical Life: Over 25000 Cycles
- Electrical Life: Over 10000 Cycles
- Insulation Resistance:  $<20M\Omega$

## TIMER

- Mechanical Oven Timer
- Time Range:  
30-60-90-120-150-180 (Minute)
- Temperature: 125 °C
- Types: CW, CCW
- Voltage and Current:  
125VAC/13A- 250VAC/6,5A

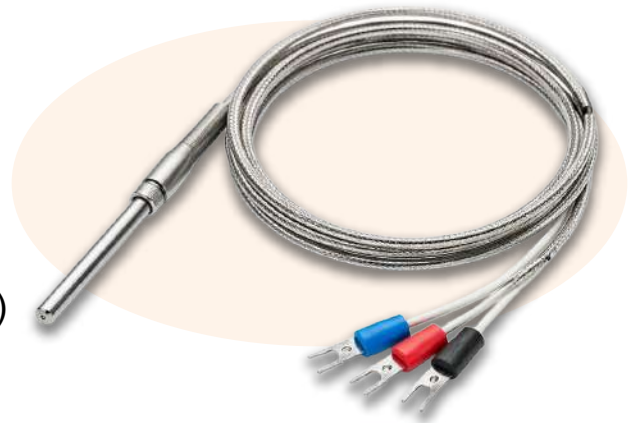


## OVEN LED LAMP

- 220V
- 1,5W LED LAMP
- Customizable led color.
- 3000K-6000K

## PT1000 TEMPERATURE SENSOR

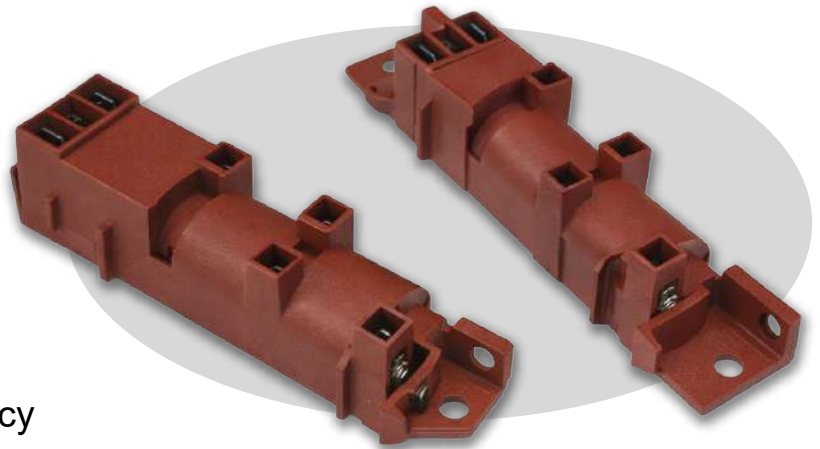
- Various types and models
- Can be customized
- VDE Certificate
- Accuracy: Class A
- Temperature range:  
• Wire (-60°C~2000°C); Chip (-50°C~4000°C)
- Long service life
- Easy to assemble



# COOKER COMPONENTS

## PULSEIGNITER

- Wide range of ignition frequency
- Wide choice of output numbers
- V0 Flammability
- VDE Certificate



## IGNITION ELECTRODE

- Anti-heat, corrosion resistance, anti-high voltage, stable electrical property and high insulation functions
- Output voltage: 16kV -25kV
- Life time: 20,000 times



## CONTACTLESS OVEN KNOBS

- Provides contactless gas on/off
- Illuminates the knob
- Ignites the oven without mechanical switch



---

## THERMOCOUPLE

- Fast response time
- Sensitive probe
- Ease of installation
- Withstands high pressure and thermal shock
- Small diameter
- A variety of probe types can be chosen



# SEMTECH



Vadi PARK, Hamidiye, Selçuklu Cd. B Blok Ofis No:2, **34408 Kağıthane/İstanbul/ TURKEY**  
**Telephone: +90 212 293 30 09 - Fax: +90 212 293 30 46**  
**info@semtech.com.tr - www.https://www.semtech.com.tr**